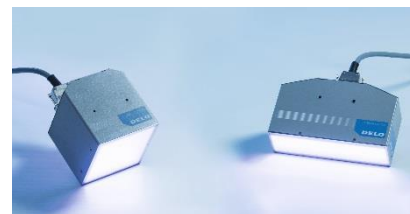




DELOLUX 50



DELOLUX 80



DELOLUX 20
Version: A1/A2
DELOLUX 202
Version: A1/A2



DELOLUX 820

Description	High-intensity spot light source	High-intensity area lamp for smaller bonding areas	High-intensity area lamp for even irradiation	Area lamp for even irradiation
Dimensions of lamp head	x1: 12 mm dia. x 71 mm x4: 15 mm dia. x 76 mm	365 nm: 27 mm dia. x 92 mm 400 nm: 27 mm dia. x 92 mm 460 nm: 20 mm dia. x 85 mm	DELOLUX 20: 112 mm x 112 mm x 121 mm DELOLUX 202: 209 mm x 67 mm x 121 mm	x4: 848 mm x 82.8 mm x 179 mm x6: 1,267 mm x 82.8 mm x 179 mm
Light exit area	x1: 8.6 mm dia.* x4: 11.5 mm dia.* * various optics available	365 nm: 23,0 mm dia. 400 nm: 23,0 mm dia. 460 nm: 16,9 mm dia.	DELOLUX 20: 100 mm x 100 mm DELOLUX 202: 202 mm x 49 mm	x4: 848 mm x 30 mm x6: 1,250 mm x 30 mm
Wavelength / typical intensity	365 nm x1: ≥ 18,000 mW / cm ² 365 nm x4: ≥ 3,500 mW / cm ² 400 nm x1: ≥ 15,000 mW / cm ² 400 nm x4: ≥ 7,000 mW / cm ² 460 nm x1: ≥ 14,000 mW / cm ²	365 nm: ≥ 4,000 mW / cm ² 400 nm: ≥ 5,500 mW / cm ² 460 nm: ≥ 2,500 mW / cm ²	365 nm (A1): ≥ 600 mW / cm ² 365 nm (A2): ≥ 1,200 mW / cm ² 400 nm (A1): ≥ 1,000 mW / cm ² 400 nm (A2): ≥ 2,000 mW / cm ² 460 nm (A1): ≥ 1,000 mW / cm ² 460 nm (A2): ≥ 2,000 mW / cm ²	365 nm: ≥ 250 mW / cm ²
Cooling mechanism	Passively cooled Powerguide, heat sink in lamp head	Closed and monitored Coldguide liquid cooling system	Active air cooling	Liquid cooling with external cooling unit
Control	DELO-UNIPRO, DELO-UNIPRO Light or external PLC	DELO-UNIPRO, DELO-UNIPRO Light or external PLC	DELOLUX pilot and optional downstream PLC	DELO-UNIPRO, DELO-UNIPRO Light or external PLC



DELOLUX 502



DELOLUX 503



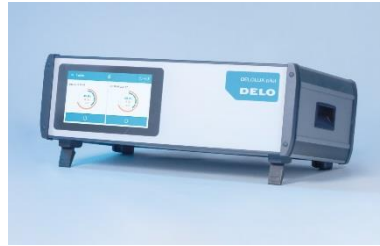
Coming soon

DELOLUX 504

Description	High-intensity spot light source	High-intensity spot light source	High-intensity spot light source
Dimensions of lamp head	10 (20) mm × 21.3 mm × 4.9 mm	20 mm × 37 mm × 7 mm	20 mm × 42 mm × 7.3 mm
Light exit area / direction	2 mm × 7 mm/180°	3 mm × 10 mm/120°	2 mm × 7 mm
Wavelength / typical intensity	365 nm: ≥ 1.350 mW / cm ² @ 6 mm 405 nm: ≥ 3.000 mW / cm ² @ 6 mm*	365 nm: ≥ 3.000 mW / cm ² @ 6 mm** 400 nm: ≥ 5.000 mW / cm ² @ 6 mm**	365 nm: ≥ 4,100 mW/cm ² @ 6 mm
Cooling mechanism	Passively cooled Powerguide, heat sink in lamp head	Passively cooled Powerguide, heat sink in lamp head	Passively cooled Powerguide, heat sink in lamp head
Control	DELO-UNIPRO, DELO-UNIPRO Light or external PLC	DELO-UNIPRO, DELO-UNIPRO Light or external PLC	DELO-UNIPRO, DELO-UNIPRO Light or external PLC
Reliability	Intensity measurement with DELOLUXcontrol	Intensity measurement with DELOLUXcontrol	Intensity measurement with DELOLUXcontrol

* DELOLUX 502 / 400 available on request

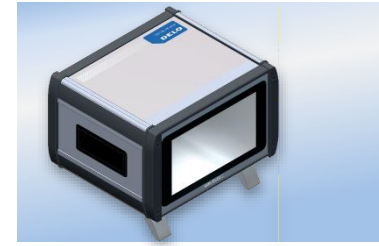
** intern laboratory measurement



DELOLUX pilot AxT



DELOLUX pilot Axi / PROFINET



DELOLUX pilot S4T



DELOLUX pilot S4i

Description	Control unit for DELOLUX 20 / DELOLUX 202 series	Switch cabinet version of control unit for DELOLUX 20 / DELOLUX 202 series	Control unit for DELOLUX 50 series	Switch cabinet version of control unit for DELOLUX 50 series
Automatic temperature compensation	max. $\pm 2\%$ Intensity deviation			
Dimensions (W x H x D)	440 mm x 305 mm x 153 mm	A1i / A1i PROFINET: 184 mm x 305 mm x 146 mm A2i / A2i PROFINET: 250 mm x 305 mm x 146 mm	235 mm x 202 mm x 152 mm	94 mm x 104 mm x 86 mm
User interface	7" touch screen	Two-digit 7-segment display	7" touch screen	Three-digit 7-segment display
Power consumption	A1T: 515 W A2T: 825 W A3T: 1,140 W A4T: 1,450 W	A1i / A1i PROFINET: 400 W A2i / A2i PROFINET: 800 W	230 W (depending on the number and type of the connected lamp heads)	200 W
Power specification	15 % - 100 % (increment 0.1 %)	15 % - 100 % (increment 0.1 %)	5 % - 100 % (increment 0.2 %)	5 % - 100 % (increment 0.2 %)
Irradiation time	0.1 s to ∞	0.1 s to ∞	0.1 s to ∞	0.025 s to ∞
Weight	A1T: 5.7 kg A2T: 7.9 kg A3T: 10.1 kg A4T: 12.3 kg	A1i / A1i PROFINET: 5.0 kg A2i / A2i PROFINET: 7.3 kg	3.6 kg	440 g



DELO-DOT PN3



DELO-DOT D4

Actuator	Pneumatically driven	Piezo driven
Min. dispensing quantity	~ 5 nl	~ 2 nl
Media viscosity	Aqueous up to 500,000 mPa·s	> 5,000 mPa·s (thixotropic)
Max. dispensing frequency	330 Hz	2,000 Hz
Typ. actuator lifetime	> 1 billion cycles	> 1 billion cycles
Nozzle diameters	50 – 500 µm needle adapter 100, 500 µm	100 – 400 µm
Nozzle heating range	Ambient temperature up to +100°C	Ambient temperature up to +100°C
Supply pressure	> 6 bar	–